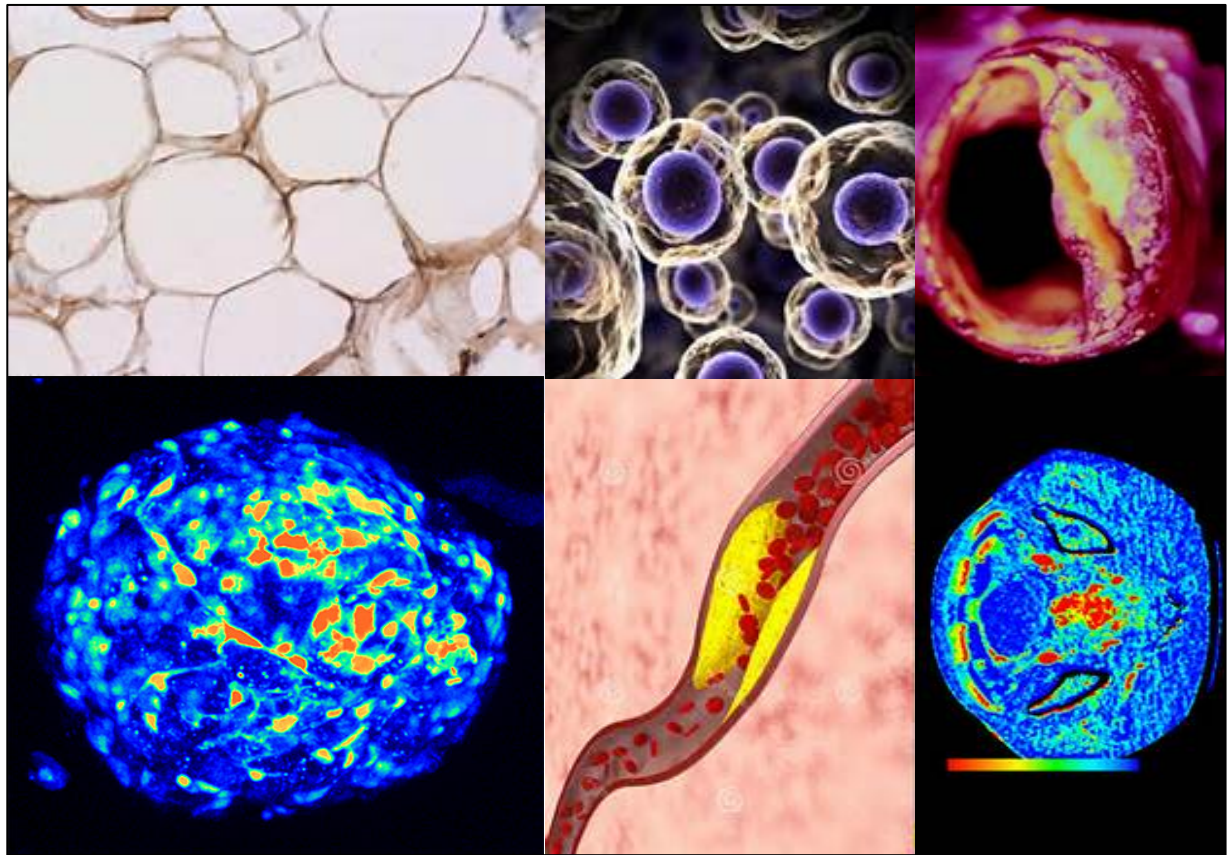


ASSESSMENT OF OBESITY-RELATED HEALTH RISKS



- **Overweight leads to the “metabolic syndrome” which predisposes individuals to life-threatening diseases such as diabetes, cardiovascular insufficiency, fatty liver and cancer; and to identify how obesity impacts pro-inflammatory immune cell function, leading to metabolic diseases such as diabetes is critical in the management of obesity-related health risks.**
- **Fat tissue acts as an endocrine organ producing bioactive soluble factors (adipokines) which contribute to regulation of inflammatory balance and hepatic production of hepatokines controlling insulin sensitivity and the pathogenesis of diabetes and target organ damage.**
- **We customize an effective assessment of obesity-related health risks supported by a Laboratory Diagnostic Test (LDT) using a protein expression profiling method based on a multiplex fully automated, protein array chip system.**
- **Our LDT determines the blood level of key adipokines (Leptin, adiponectin, visfatin, omentin, vaspin, progranulin, apelin, chemerin, BP4), hepatokines (FGF21, LECT2, ANGPTL3/8, Fetuin, SEPP1) and inflammatory mediators including (IL-6, MCP-1, PAI-1, CTRP-4, TNF α , sICAM-1, IL-8, IL-10, IFN- γ and IP-10 or CXCL10, and C-reactive protein).**

PERSONA BIOMED Inc. is a clinical-stage biotech company devoted to the development of clinically-validated gene and molecular expression profiling methods for contributing to the success of Precision Medicine.

Contact Information: Persona Biomed, Inc. 625 N. Washington St., Suite 425 Alexandria, VA 22314
personabiomed@gmail.com; www.personabiomed.com