

# Symetra Life Ins Co

**Group Affiliation:** Symetra Life Group  
**Address:** P.O. Box 34690  
 Seattle WA 98124-1690  
**Phone:** 425-256-8000

**Domicile:** IA  
**NAIC Number:** 68608  
**Year Established:** 1957  
**Company Type:** Stock

## Ratings

A.M. Best Company(Best's Rating, 15 ratings)	A (3)
Standard & Poor's(Fin. Strength, 20 ratings)	A (6)
Moody's(Fin. Strength, 21 ratings)	A1 (5)
Fitch Ratings(Fin. Strength, 21 ratings)	A (6)
Weiss(Safety Rating, 16 ratings)	B+ (4)
Comdex Ranking(Percentile in Rated Companies)	80

## Assets & Liabilities

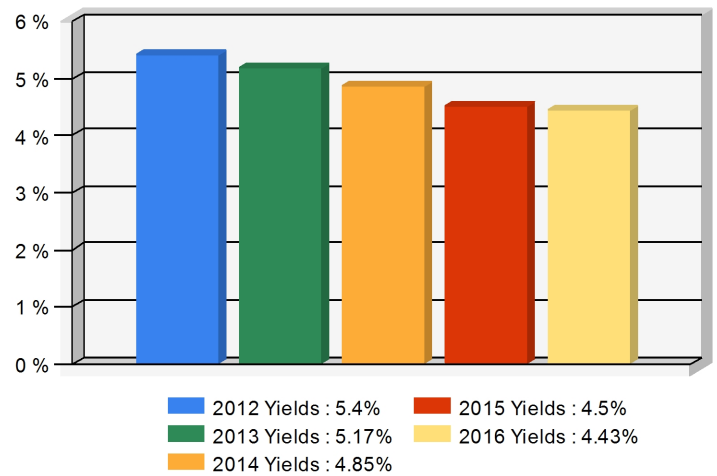
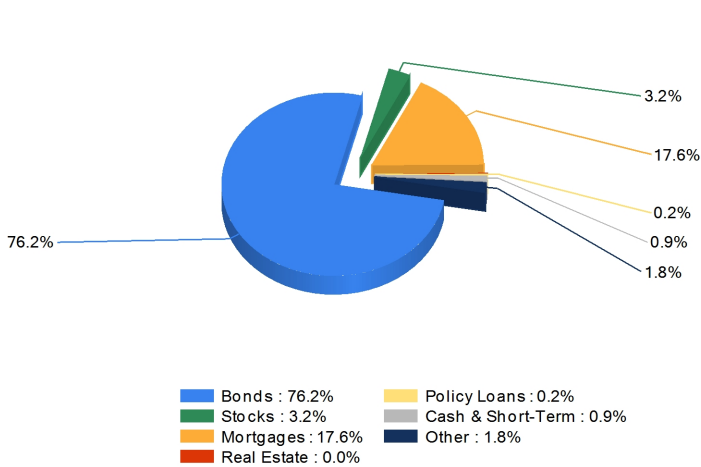
Total Admitted Assets	34,289,243
Total Liabilities	32,206,860
Separate Accounts	5,453,572
Total Surplus & AVR	2,418,265
As % of General Account Assets	8.4%

## Invested Asset Distribution

Total Invested Assets 28,202,804

## 5 Year Investment Yields

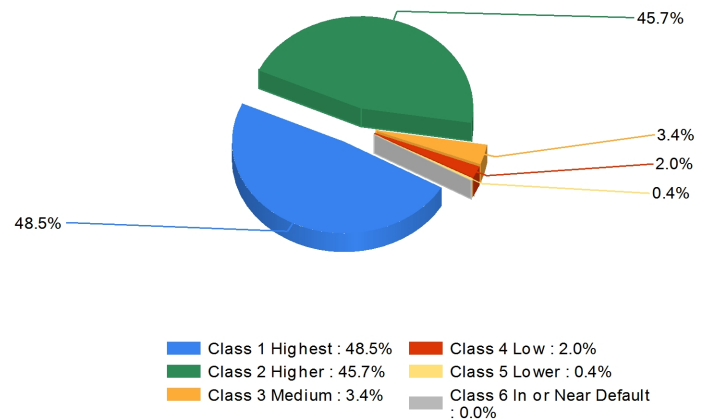
5 Year Average 4.87%



## Non-Performing Assets

Bonds In or Near Default	0.1%
Problem Mortgages	0.0%
Real Estate Acquired by Foreclosure	0.0%
Total Non-Performing Assets/Surplus & AVR	0.1%
As a Percent of Invested Assets	0.0%

## Bond Quality



## Income & Earnings

Total Income	5,719,514
Net Premiums Written	4,421,769
Earnings Before Dividends and Taxes	50,633
Net Operating Earnings	53,618

A Best's Financial Strength Rating opinion addresses the relative ability of an insurer to meet its ongoing insurance obligations. It is not a warranty of a company's financial strength and ability to meet its obligations to policyholders. View our Important Notice: Best's Credit Ratings for a disclaimer notice and complete details at <http://www.ambest.com/ratings/notice>.

Data for Year-End 2016 from the life insurance companies' statutory annual statements. All dollar amounts are in thousands. All ratings shown are current as of October 13, 2017.

Presented by: CPI Companies, 513 Centennial Blvd, Voorhees, NJ 08043 Phone: 8568741250 Email: [curta@cpicompanies.com](mailto:curta@cpicompanies.com)