

National Life Ins Co

Group Affiliation: National Life Group
Address: 1 National Life Drive
 Montpelier VT 05604
Phone: 802-229-3333

Domicile: VT
NAIC Number: 66680
Year Established: 1848
Company Type: Stock

Ratings

A.M. Best Company(Best's Rating, 15 ratings) A (3)
 Standard & Poor's(Fin. Strength, 20 ratings) A+ (5)
 Moody's(Fin. Strength, 21 ratings) A2 (6)
 Weiss(Safety Rating, 16 ratings) B (5)
 Comdex Ranking(Percentile in Rated Companies) 80

Assets & Liabilities

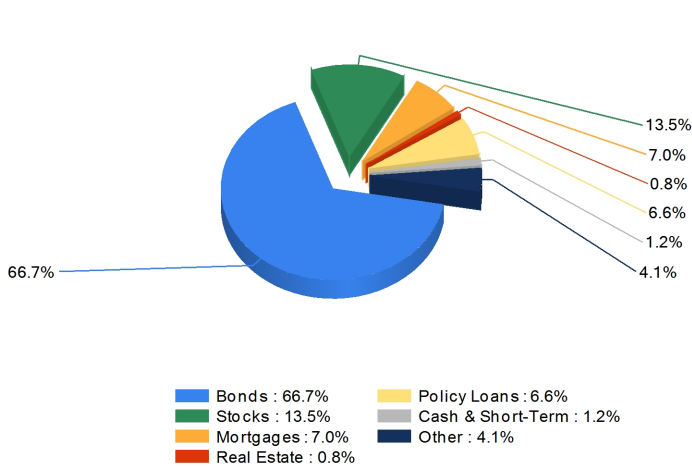
Total Admitted Assets 9,276,887
 Total Liabilities 7,351,659
 Separate Accounts 740,004
 Total Surplus & AVR 2,000,836
 As % of General Account Assets 23.4%

Invested Asset Distribution

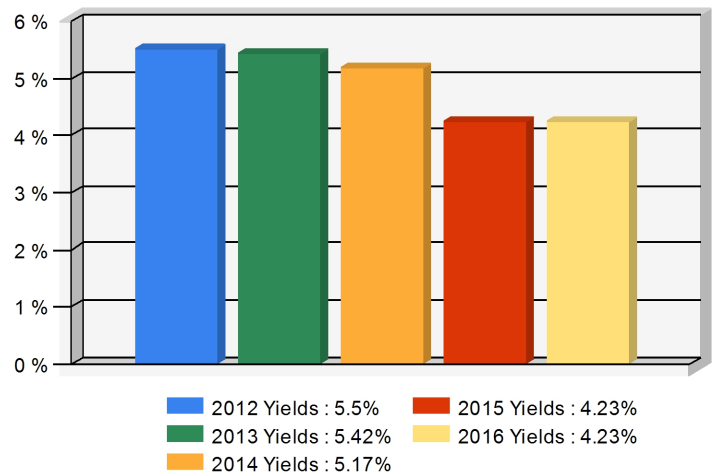
Total Invested Assets 7,924,215

5 Year Investment Yields

5 Year Average 4.91%



Distribution of the invested assets



Net yield on mean invested assets

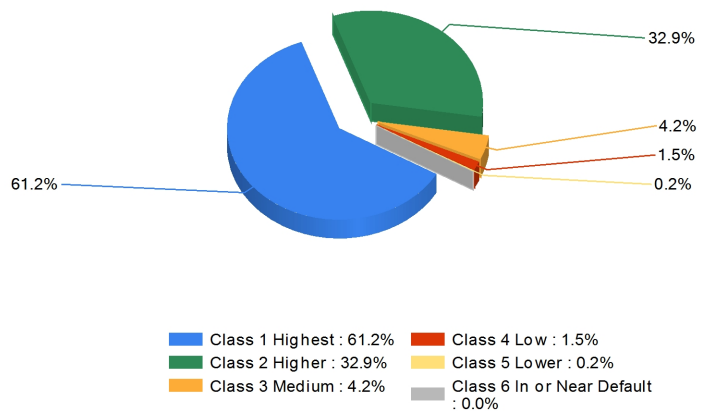
Non-Performing Assets

Bonds In or Near Default 0.1%
 Problem Mortgages 0.0%
 Real Estate Acquired by Foreclosure 0.2%
 Total Non-Performing Assets/Surplus & AVR 0.3%
 As a Percent of Invested Assets 0.1%

Income & Earnings

Total Income 693,112
 Net Premiums Written 331,101
 Earnings Before Dividends and Taxes -84,338
 Net Operating Earnings -37,306

Bond Quality



Distribution of bond classes

A Best's Financial Strength Rating opinion addresses the relative ability of an insurer to meet its ongoing insurance obligations. It is not a warranty of a company's financial strength and ability to meet its obligations to policyholders. View our Important Notice: Best's Credit Ratings for a disclaimer notice and complete details at <http://www.ambest.com/ratings/notice>.

Data for Year-End 2016 from the life insurance companies' statutory annual statements. All dollar amounts are in thousands. All ratings shown are current as of October 13, 2017.

Presented by: CPI Companies, 513 Centennial Blvd, Voorhees, NJ 08043 Phone: 8568741250 Email: curta@cpicompanies.com