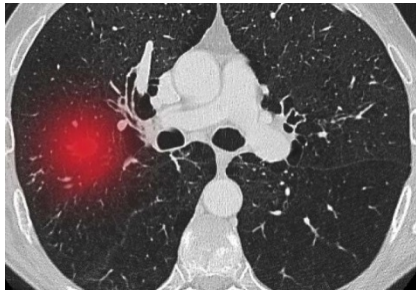




華埠服務中心
Chinatown Service Center

Keck Medicine of USC
BEYOND EXCEPTIONAL MEDICINE™



Lung Cancer Early Detection Study

ARE YOU A SMOKER OR KNOW SOMEONE WHO SMOKES?

If you are **50 or older and smoke**, you are at a higher risk for developing lung cancer. A yearly low-dose CT (LDCT) screening can find lung cancer early, when it is curable.

WHO SHOULD GET SCREENED?

1. Current and former smokers who are 50 years and older
2. Smoked an equivalent of one pack of cigarettes a day for at least 20 years
3. May have additional risk factors such as family history of lung cancer and chronic lung disease

- **Low-dose CT scan at no cost to you (takes less than 5 minutes)**
- **Willing to answer some questions and provide blood samples (~2 tablespoons)**
- **Compensation for your participation**

Please call **(323) 442-7672** or email **radstudy@usc.edu**