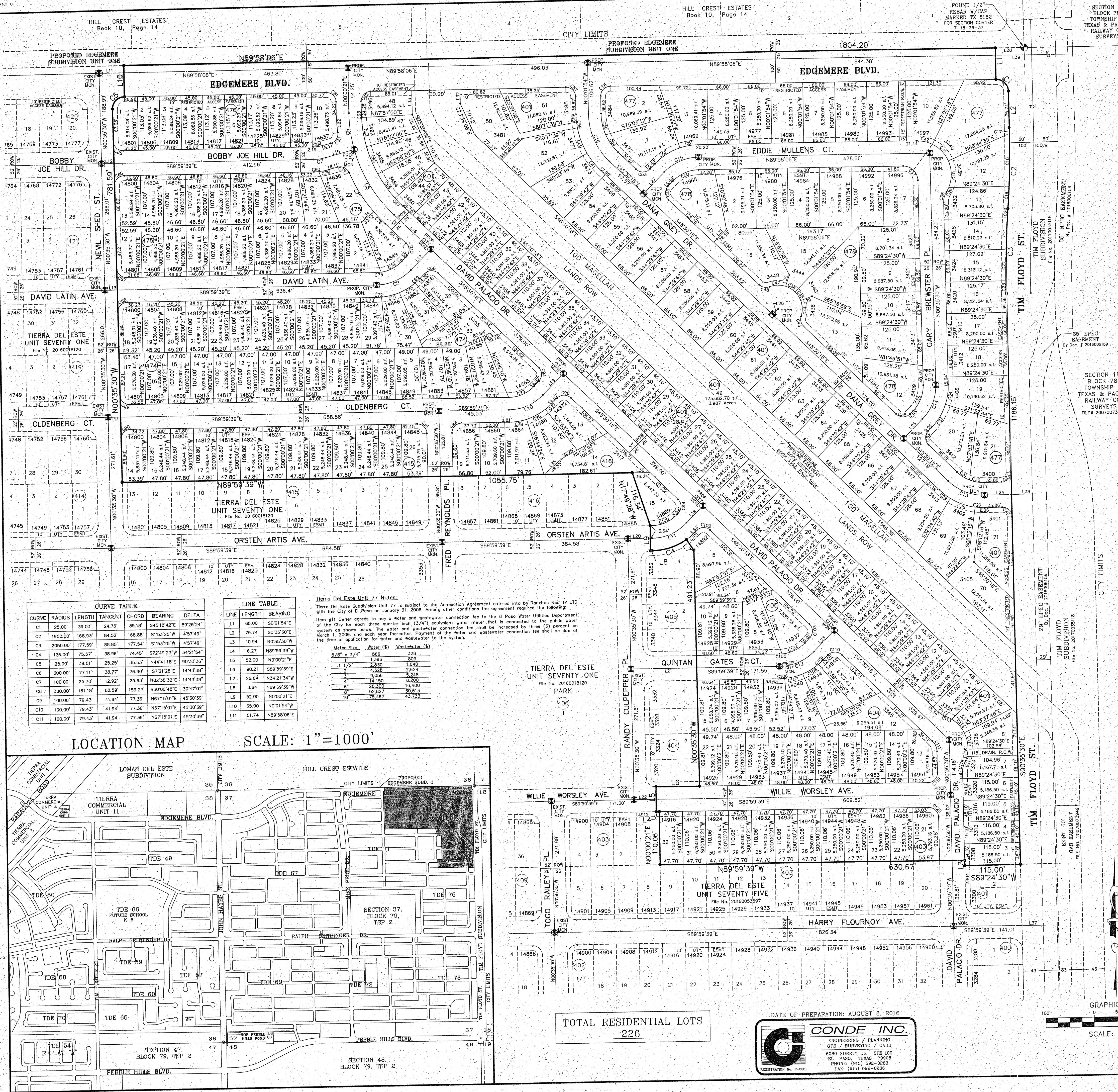


# TIERRA DEL ESTE UNIT SEVENTY SEVEN

BEING PORTION OF SECTION 37, BLOCK 79, TOWNSHIP 2, TEXAS AND PACIFIC RAILWAY Co. SURVEYS, CITY OF EL PASO, EL PASO COUNTY, TEXAS CONTAINING: 49.93± ACRES



CURVE TABLE				
CURVE	RADIUS	LENGTH	TANGENT	CHORD
C12	100.00'	79.43'	41.94'	77.36'
C13	100.00'	82.63'	43.59'	80.51'
C14	100.00'	78.69'	41.61'	76.68'
C16	100.00'	79.37'	41.91'	77.30'
C17	1950.00'	12.29'	6.14'	12.29'
C18	1950.00'	109.24'	54.64'	109.23'
C19	1950.00'	18.40'	23.70'	47.40'
C20	2050.00'	66.13'	33.07'	66.12'
C21	2050.00'	66.03'	33.02'	66.03'
C22	2050.00'	66.03'	33.02'	66.03'
C23	2050.00'	66.03'	33.02'	66.03'
C24	20.00'	31.42'	20.00'	28.28'
C25	20.00'	31.42'	20.00'	28.28'
C26	131.00'	8.09'	4.00'	8.09'
C27	131.00'	12.02'	6.01'	12.01'
C28	131.00'	54.58'	27.69'	54.59'
C29	131.00'	26.39'	14.24'	26.34'
C30	79.00'	31.08'	15.75'	30.88'
C31	79.00'	31.08'	15.75'	30.88'
C32	20.00'	31.42'	20.00'	28.28'
C33	126.00'	57.27'	28.14'	56.77'
C34	126.00'	41.88'	21.14'	41.69'
C35	20.00'	31.42'	20.00'	28.28'
C36	74.00'	58.23'	30.72'	56.74'
C37	30.00'	46.83'	23.71'	42.22'
C38	40.00'	22.91'	11.78'	22.80'
C39	40.00'	10.40'	5.21'	10.39'
C40	70.00'	57.39'	30.42'	55.80'
C41	70.00'	48.45'	25.24'	47.49'
C42	70.00'	33.13'	16.88'	32.82'
C43	20.00'	22.60'	12.68'	21.42'
C44	50.00'	34.17'	17.78'	33.51'
C45	50.00'	22.00'	11.18'	21.83'
C46	50.00'	22.65'	11.63'	22.46'
C47	50.00'	34.17'	17.78'	33.51'
C48	20.00'	22.60'	12.68'	21.42'
C49	20.00'	31.42'	20.00'	28.28'
C50	74.00'	58.23'	30.72'	56.74'
C51	126.00'	57.27'	28.14'	56.77'
C52	126.00'	41.88'	21.14'	41.69'
C53	20.00'	31.42'	20.00'	28.28'
C54	114.00'	45.24'	22.92'	44.94'
C55	114.00'	45.24'	22.92'	44.94'
C56	20.00'	31.42'	20.00'	28.28'
C57	20.00'	31.42'	20.00'	28.28'
C58	166.00'	16.31'	8.16'	16.30'
C59	166.00'	12.01'	6.01'	12.01'
C60	166.00'	57.36'	28.97'	57.08'
C61	166.00'	46.07'	23.18'	45.92'
C62	20.00'	31.42'	20.00'	28.28'
C63	20.00'	31.42'	20.00'	28.28'
C64	274.00'	61.83'	31.05'	61.70'
C65	274.00'	61.82'	31.04'	61.69'
C66	274.00'	61.82'	31.04'	61.69'
C67	274.00'	22.40'	11.21'	22.39'
C68	20.00'	31.42'	20.00'	28.28'
C69	126.00'	15.63'	6.82'	15.62'
C70	126.00'	38.35'	19.33'	38.20'
C71	126.00'	38.35'	19.33'	38.20'
C72	126.00'	38.35'	19.33'	38.20'
C73	74.00'	9.94'	4.98'	9.93'
C74	74.00'	48.84'	25.35'	47.96'
C75	20.00'	31.42'	20.00'	28.28'
C76	326.00'	34.63'	17.33'	34.62'
C77	326.00'	34.63'	17.33'	34.62'
C78	20.00'	28.70'	17.50'	28.34'
C79	126.00'	21.80'	10.98'	21.87'
C80	126.00'	10.49'	5.25'	10.48'
C81	20.00'	31.42'	20.00'	28.28'
C82	326.00'	40.32'	20.19'	40.30'
C83	20.00'	28.70'	17.50'	28.34'
C84	74.00'	19.02'	9.56'	18.97'
C85	20.00'	31.42'	20.00'	28.28'
C86	20.00'	31.42'	20.00'	28.28'
C87	20.00'	31.42'	20.00'	28.28'
C88	20.00'	31.42'	20.00'	28.28'
C89	20.00'	31.42'	20.00'	28.28'
C90	20.00'	31.42'	20.00'	28.28'

CURVE TABLE				
CURVE	RADIUS	LENGTH	TANGENT	CHORD
C91	20.00'	31.21'	19.79'	28.43'
C92	20.00'	31.21'	19.79'	28.43'
C93	74.00'	58.78'	31.04'	57.25'
C94	20.00'	79.37'	41.91'	77.30'
C95	126.00'	36.83'	18.55'	36.69'
C96	126.00'	44.30'	22.38'	44.07'
C97	126.00'	18.96'	9.50'	18.94'
C98	20.00'	31.42'	20.00'	28.28'
C99	20.00'	31.42'	20.00'	28.28'
C100	74.00'	58.78'	31.04'	57.25'
C101	126.00'	24.51'	12.29'	24.47'
C102	20.00'	31.42'	20.00'	28.28'
C103	20.00'	31.42'	20.00'	28.28'
C104	74.00'	53.36'	27.80'	52.21'
C105	74.00'	5.42'	2.71'	5.42'
C106	126.00'	10.07'	5.04'	10.07'
C107	126.00'	38.61'	19.46'	38.46'
C108	126.00'	38.61'	19.46'	38.46'
C109	126.00'	12.80'	6.41'	12.79'
C110	20.00'	31.42'	20.00'	28.28'
C111	30.00'	23.52'	12.40'	23.52'
C112	40.00'	17.19'	8.73'	17.06'
C113	70.00'	14.90'	7.48'	14.87'
C114	70.00'	38.66'	19.68'	38.42'
C115	70.00'	34.88'	17.81'	34.62'
C116	70.00'	15.22'	7.64'	15.19'
C117	70.00'	15.09'	7.58'	15.07'
C118	40.00'	19.25'	9.62'	19.07'
C119	20.00'	31.62'	20.21'	28.43'
C120	20.00'	31.21'	19.79'	28.43'

NOTES:  
WATER AND SEWER SERVICES WILL BE EXTENDED TO THIS SUBDIVISION (TIERRA DEL ESTE UNIT 77) FROM EXISTING EL PASO WATER UTILITIES/PUBLIC SERVICE BOARD FACILITIES AND WILL BE CONSTRUCTED AND OPERABLE AS OF JULY 2017.  
THE INSTRUMENT ASSURING THE CERTIFICATION THAT WATER AND SEWER SERVICES FACILITIES DESCRIBED BY THIS PLAT ARE IN COMPLIANCE WITH THE MODEL RULES ADOPTED UNDER SECTION 16.542, TEXAS WATER CODE IS FILED IN THE OFFICE OF THE COUNTY CLERK, DEED AND RECORD SECTION.  
INSTRUMENT NO. 20170047510 DATE 4/29/17  
TAX CERTIFICATE FOR THIS SUBDIVISION ARE FILED IN THE OFFICE OF THE COUNTY CLERK, DEED AND RECORDS SECTION.  
INSTRUMENT NO. 20170047510 DATE 4/29/17  
RESTRICTIVE COVENANTS FOR THIS SUBDIVISION ARE FILED IN THE OFFICE OF THE COUNTY CLERK, DEED AND RECORDS SECTION.  
INSTRUMENT NO. 20170047510 DATE 4/29/17  
LOT CORNERS BEING 1/2" REBAR WITH CAP MARKED TX 5152 WILL BE SET UP ON COMPLETION OF CONSTRUCTION OF ROADWAYS AND UTILITIES.  
U.S. POSTAL SERVICE DELIVERY WILL BE PROVIDED THROUGH NEIGHBORHOOD DELIVERY AND COLLECTION BOX UNITS.  
ACCORDING TO THE FEDERAL EMERGENCY MANAGEMENT AGENCY FLOOD INSURANCE RATE MAP COMMUNITY PANEL NO. 4802012705, DATED SEPTEMBER 4, 1991 THIS PROPERTY IS IN FLOOD HAZARD ZONE X OUTSIDE THE 500 YEAR FLOOD-PLAIN.

DEDICATION  
RANCHOS REAL XV, L.L.C., property owner of this land hereby present this plat and dedicate to the use of the public, the streets, drains, drainage R.O.W., pedestrian easements, public easements, gas easements and utility easements as shown on this plat. The undersigned authority, on this day personally appeared Douglas A. Schwartz, Manager of RANCHOS REAL XV, L.L.C., on BEHALF of SAID LIMITED LIABILITY COMPANY, known to me to be the person whose name is subscribed to the foregoing instrument and acknowledged to me that he executed the same as the act and deed of said company for the purpose and considerations herein expressed.  
Witness my signature this 25th day of May, 2017.  
By: Douglas A. Schwartz, MANAGER

ATTEST: NOT REQUIRED  
STATE OF TEXAS  
COUNTY OF EL PASO  
Before me, the undersigned authority, on this day personally appeared Douglas A. Schwartz, Manager of RANCHOS REAL XV, L.L.C., on BEHALF of SAID LIMITED LIABILITY COMPANY, known to me to be the person whose name is subscribed to the foregoing instrument and acknowledged to me that he executed the same as the act and deed of said company for the purpose and considerations herein expressed.  
Given under my hand and seal of office this 25th day of May, 2017.

Notary Public in and for El Paso County  
My Commission Expires August 02, 2018  
CITY PLAN COMMISSION  
This subdivision is hereby approved as to the platting and as to the condition of the dedication in accordance with Chapter 212 of the Local Government Code of Texas.  
Texas Notary Public  
Approved for filing this 15th day of June, 2017.  
Planning and Inspections Director  
Filed and recorded in the office of the County Clerk of El Paso County, Texas, this 29th day of JUNE, 2017, A.D. in File No. 20170047510  
FOR RECORDING PURPOSES ONLY  
By Deputy  
Yvonne Conde Curry, P.E.  
Registered Professional Engineer  
Registration No. 84548  
This plat represents a survey made on the ground by me or under my supervision and complies with the current Texas Board of Professional Land Survey Professional and Technical Standards.  
Ron R. Conde, Registered Professional Land Surveyor  
Texas License No. 5152

SCHOOL DISTRICT  
SOCORRO INDEPENDENT SCHOOL DISTRICT  
12440 ROJAS DRIVE

DATE OF PREPARATION: AUGUST 8, 2016  
CONDE INC.  
ENGINEERING / PLANNING  
GPS / SURVEYING / CAD  
8000 BUREAU DR., SUITE 100  
EL PASO, TEXAS 79905  
PHONE: (915) 682-0283  
FAX: (915) 682-0288

TOTAL RESIDENTIAL LOTS  
226

