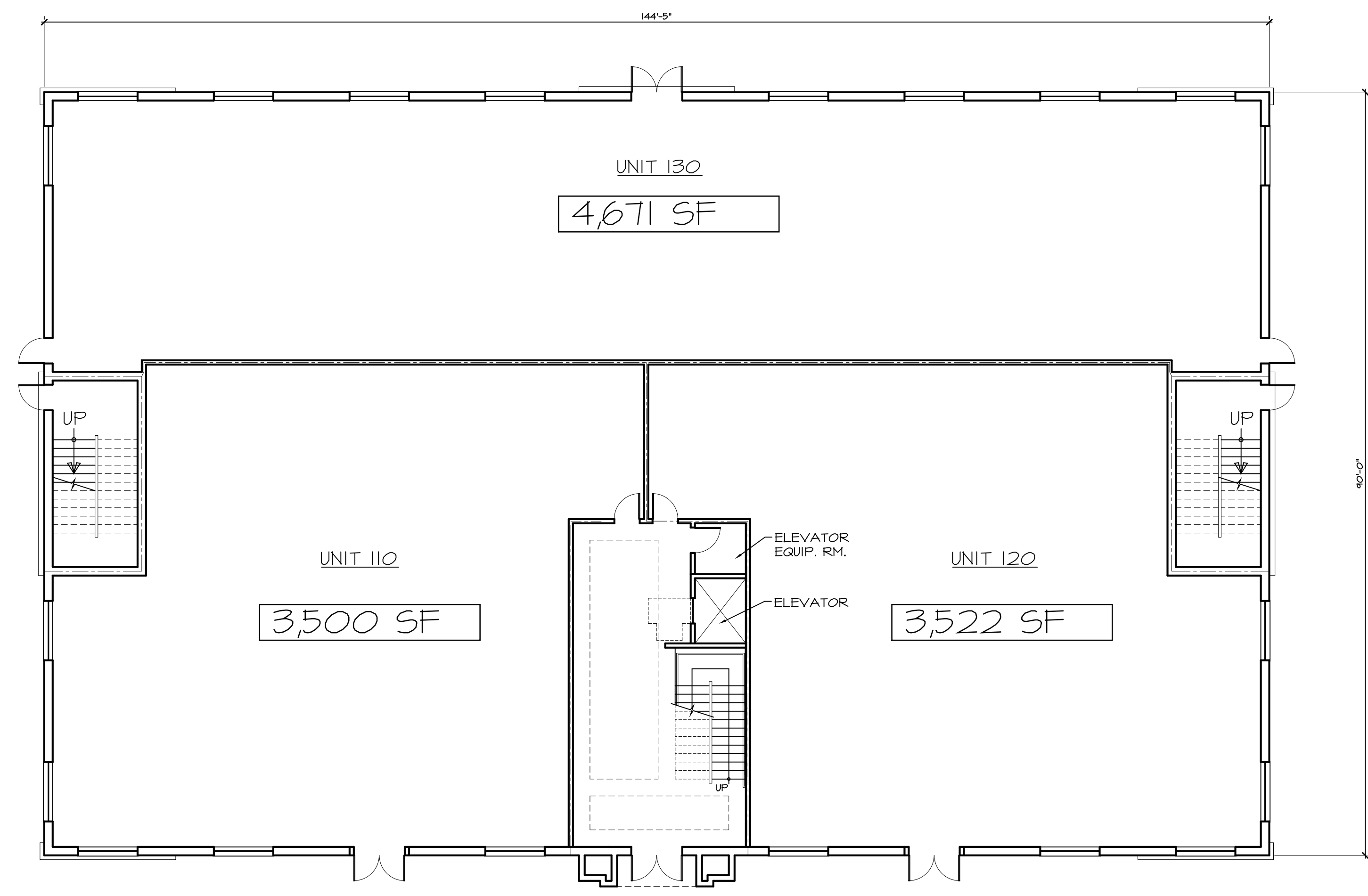


REVISIONS	
BY:	DATE

ISSUE DATE:	11-30-17
SCALE:	AS NOTED
DRAWN:	JB / TR / DS
CHECKED:	JB

PROJECT #	217-117
SHEET TITLE:	FIRST FLOOR PLAN
SHEET #	



FIRST FLOOR PLAN
SCALE: 3/32" = 1'-0"

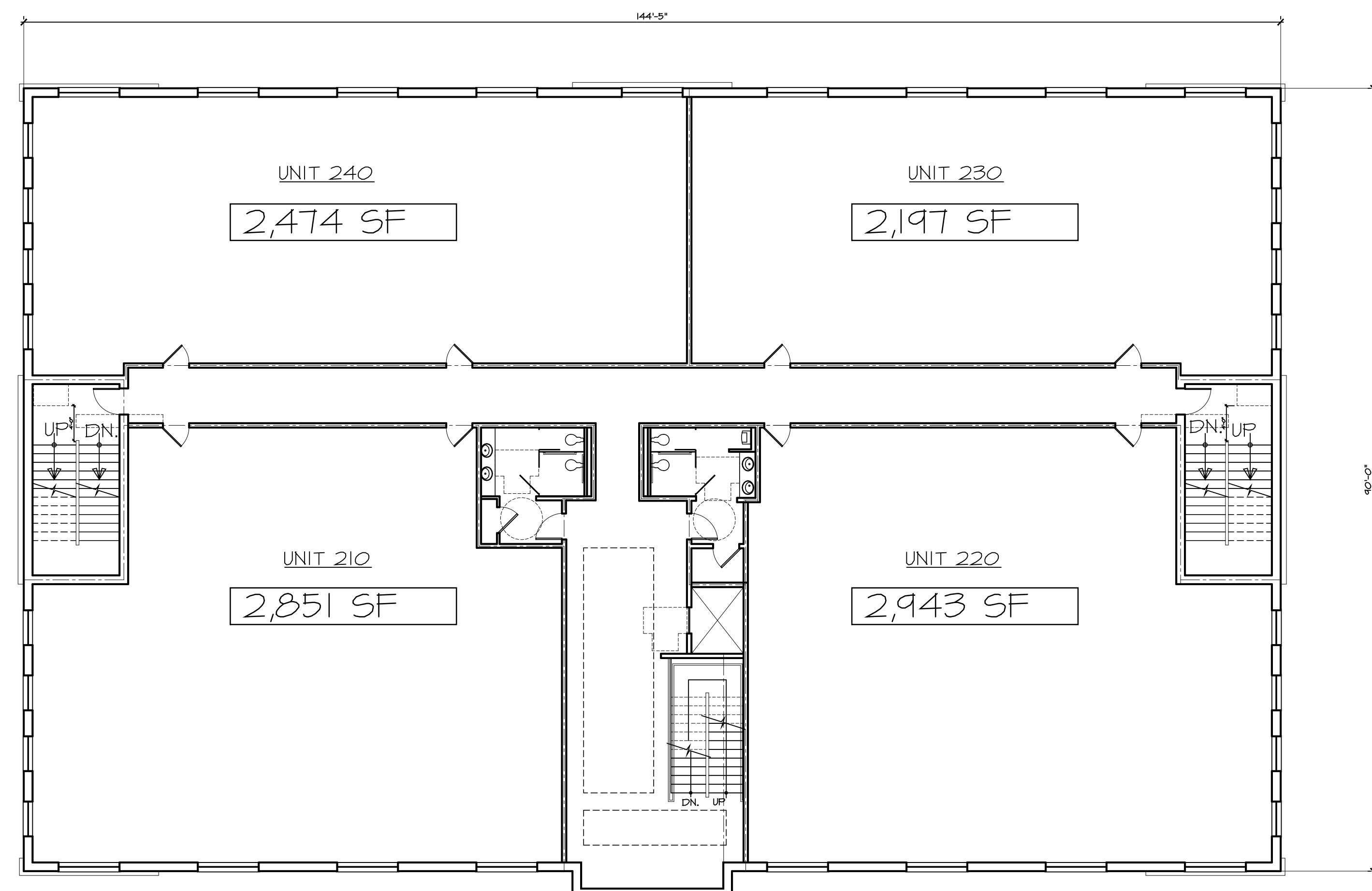
BUILDING D FIRST FLOOR	110	120	130	TOTAL
SQUARE FOOTAGE (PER UNIT)	3500	3522	4671	11693
COMMON AREA (TOTAL FIRST FLOOR)				1448
				13141

13,141 GSF

REVISIONS	
BY:	DATE

ISSUE DATE:	11-30-17
SCALE:	AS NOTED
DRAWN:	JB / TR / DS
CHECKED:	JB

PROJECT #	217-117
SHEET TITLE:	SECOND FLOOR PLAN
SHEET #	A4.1D



1 SECOND FLOOR PLAN
A4.1D SCALE: 3/32" = 1'-0"

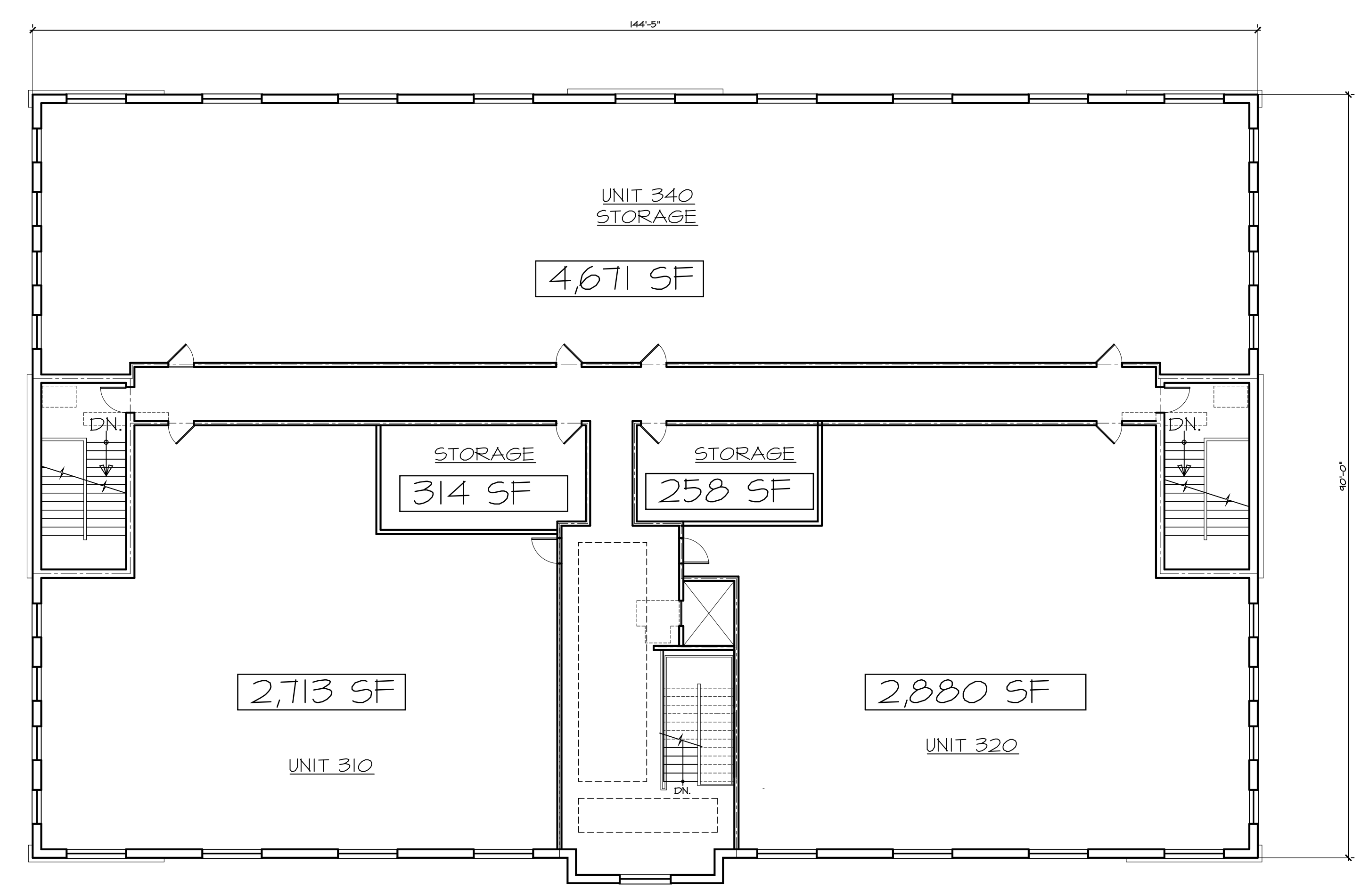
BUILDING D	210	220	230	240	TOTAL
SECOND FLOOR					
SQUARE FOOTAGE (PER UNIT)	2851	2943	2197	2474	10465
COMMON AREA (TOTAL 2ND FLOOR)					2667
					13132

13,132 GSF

REVISIONS	
BY:	DATE

ISSUE DATE:	11-30-17
SCALE:	AS NOTED
DRAWN:	JB / TR / DS
CHECKED:	JB

PROJECT #	217-117
SHEET TITLE:	THIRD FLOOR PLAN
SHEET #	



1 THIRD FLOOR PLAN
A4.2D SCALE: 3/32" = 1'-0"

BUILDING D	310	320	STORAGE 330	TOTAL
THIRD FLOOR				
SQUARE FOOTAGE (PER UNIT)	2713	2880	5243	10836
COMMON AREA (TOTAL 3RD FLOOR)				2296
				13132

13,132 GSF

200 UNION AVENUE
BRIDGE, NJ 08730
P. 732-528-2240
WWW.STUDIO200ARCH.COM
NJ COA # 21AC00092000

JOHN R. BURGOORFER, RA
NJ ARCHITECT # AI 12599
NJ INT. DESIGNER # ID 000363
PA ARCHITECT # AR 92380
PA ARCHITECT # RA 40368P
NY ARCHITECT # 032640-1
NCARB REG. # 53957

SEAL

SIGNATURE _____ DATE _____

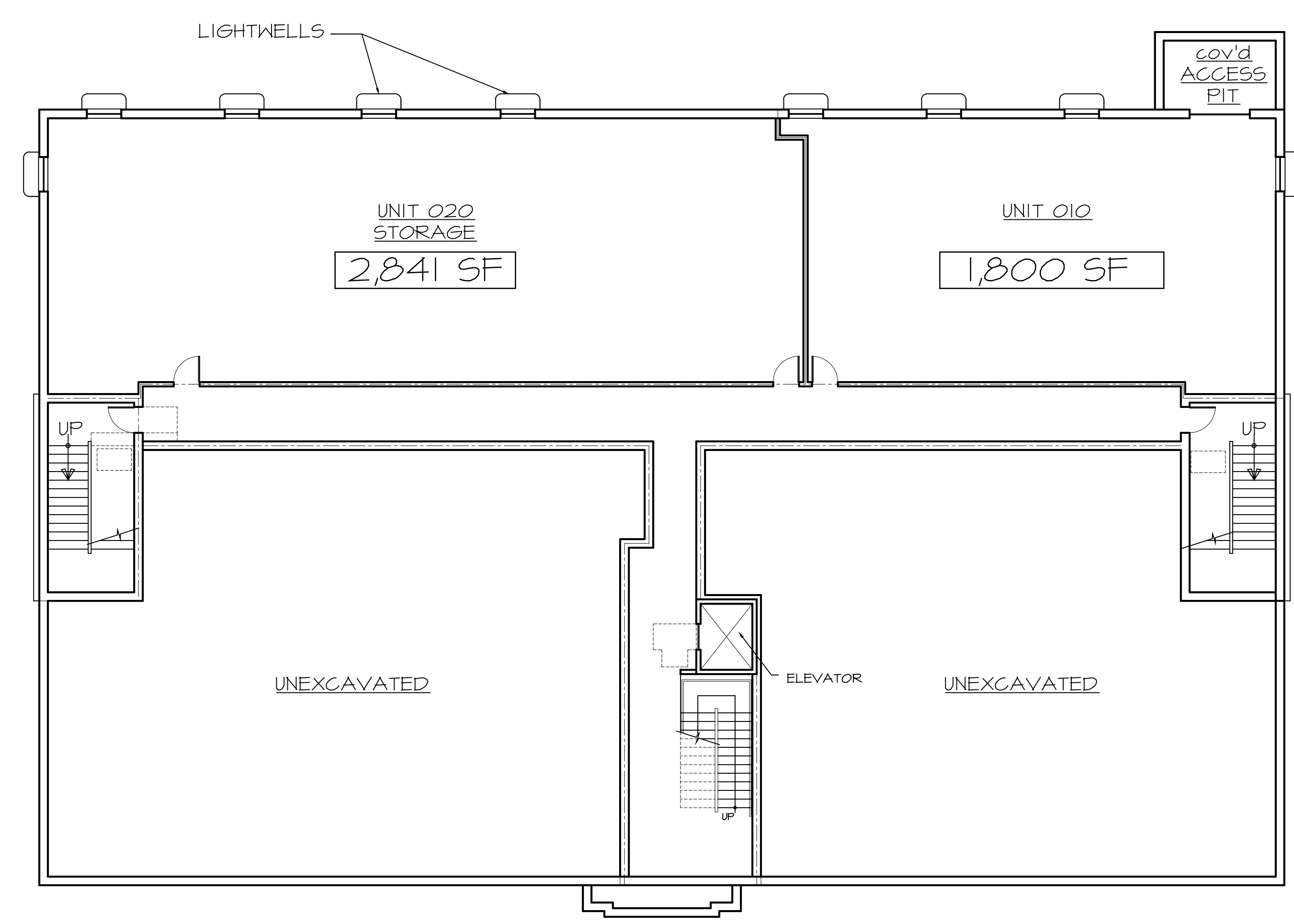
MANALAPAN CROSSING
BUILDING "D"
BLOCK 66 LOT 8.01
TOWNSHIP OF MANALAPAN
MONMOUTH COUNTY NEW JERSEY

THESE DOCUMENTS, DESIGNS, DETAILS & DETAILS INCORPORATED HEREIN ARE INSTRUMENTS OF PROFESSIONAL SERVICE AND ARE THE EXCLUSIVE PROPERTY OF STUDIO 200 ARCHITECTURE LLC. THE DOCUMENTS, DESIGNS, DETAILS & IDEAS ARE NOT TO BE USED, COPIED OR REPRODUCED IN WHOLE OR IN PART WITHOUT THE WRITTEN CONSENT OF STUDIO 200 ARCHITECTURE LLC.

REVISIONS	
BY:	DATE

ISSUE DATE: 11-30-17
SCALE: AS NOTED
DRAWN: JB / TR / DS
CHECKED: JB

PROJECT # 217-117
SHEET TITLE:
BASEMENT
FLOOR PLAN
SHEET #
A4.3D



1 BASEMENT FLOOR PLAN
A4.3D SCALE: 3/32" = 1'-0"

BUILDING D	10	STORAGE 20	TOTAL
BASEMENT	1800	2841	4641
SQUARE FOOTAGE (PER UNIT)	1800	2841	4641
COMMON AREA (TOTAL 3RD FLOOR)			2169
			6810

6,810 GSF

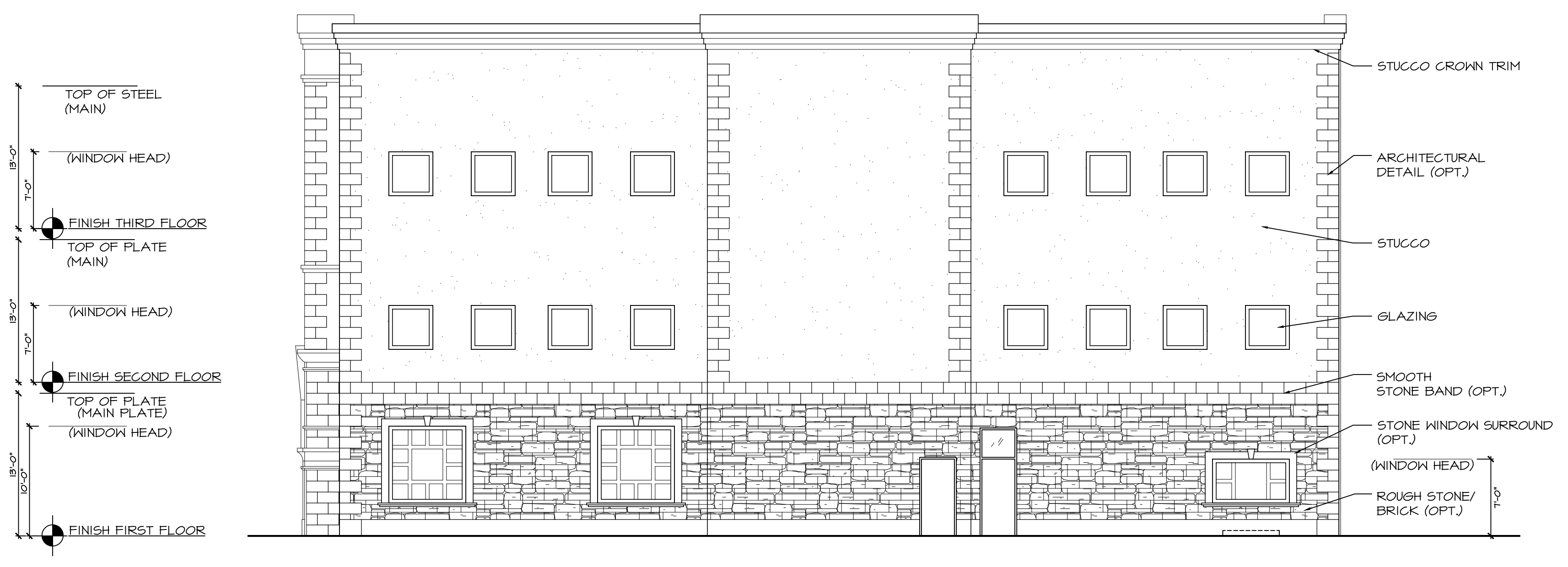
REVISIONS	
BY:	DATE

ISSUE DATE:	11-30-17
SCALE:	AS NOTED
DRAWN:	JB / TR / DS
CHECKED:	JB

PROJECT #	217-117
SHEET TITLE:	ELEVATIONS
SHEET #	A4.4D



1 SOUTH ELEVATION
A4.4D SCALE: 1/8" = 1'-0"



2 EAST ELEVATION
A4.4D SCALE: 1/8" = 1'-0"



3 WEST ELEVATION
A4.4D SCALE: 1/8" = 1'-0"



4 NORTH ELEVATION
A4.4D SCALE: 1/8" = 1'-0"