



Environmental Remediation Contractor

STATEMENT OF QUALIFICATIONS

CAGE Code: 6VAEO
DUNS: 96-863-0371
EIN: 45-2453075
NAICS Codes: 237110,
237990, 238910, 562910
Bonding Capacity
\$2.5 Million Single Project
\$5 Million Aggregate

DIG. TREAT. RESTORE.



Introduction

Environmental Remediation Contractor

We do just what our name states. We provide expertise in the environmental and civil contracting industry centered around soil and water quality. With decades of experience we offer the very best in project estimating, field execution and project management to allow for on time and on budget results. We understand that every site has different risks, so you can count on us to pay close attention to details of safety, scope and service from the beginning to the end of the project.

Services



Environmental Remediation Contractor provides its services throughout the Midwest, Northeast and Southeast United States and we are a registered contractor with the Federal Government. Our services include the following.

- Environmental remediation services of non-hazardous and hazardous waste
- In-situ mixing of hazardous waste, transportation and disposal
- Emergency spill cleanup response and services, emergency relief services for disasters
- Landfill; landfill capping, gas extraction and leachate collection systems
- Soil vapor extraction and air sparging systems
- Groundwater recovery systems (GWR)
- Underground and above ground storage tank removal
- Mine reclamation services
- Lagoon construction and closure
- Stream channel construction, restoration and realignment
- Earthwork; excavation, embankment, land clearing, earth-filled dam and levee construction
- Bank and slope repair and stabilization; retaining walls, gabion construction, earth retention systems, shoreline restoration, revetment construction and riprap installation
- Plantings and riparian restoration; trees, shrubs, bare-root, live stakes, branch layering, seeding and mulching
- Drainage and floodway canals, reservoir and ditch construction

ERC has decades of experience in which to provide a detailed scope of work along with accurate, competitive pricing. ERC offers a comprehensive service of helping clients scope out and estimate the cost of a project before it happens. This helps provide the end user accuracy and assurance to cost, approach and time to an already risky situation.

Our largest asset is our people and their knowledge and experience. We understand that the field execution along with the project management of a project is paramount to our customers. We sweat the small stuff so that the details of a project get executed with zero incidents to the site, personnel, property or the community.

Our business strategy is to attract and retain remarkable people with the ability and confidence to serve our clients. It is not to own a large fleet of equipment and have that overhead expense pushed onto our clients. We have aligned ourselves with the very best regional and national equipment rental/leasing vendors to allow for quick and cost effective mobilization regardless of where the need is. This saves our clients money on mobilization cost and assures them that they will get the newest and most appropriate piece of equipment for the scope of work. This in turns allows ERC to be nimble and quick to market for our clients.

Headquartered in Columbus, Ohio we service the
Midwestern United States
Environmental Remediation Contractor
6006 Groveport Road
Groveport, Ohio 43125

EMERGENCY SERVICES:
877.683.7724

p:614.769.6535
ercontractor.com



ERC exists on the promise and the passion to be good custodians to our environment every single day. We at ERC call this being

A FORCE FOR NATURE.

We do this using our self-explanatory methods

of **DIG.TREAT.RESTORE.**



Who is ERC?



ERC is founded on our Core Values. These are the fundamental beliefs of our organization. The core values are the guiding principles that dictate behavior and action to create an unwavering and unchanging guide to knowing right from wrong. This is known here as **ercSafe**.

evolve
respond
Collaborate
Safe

evolve - We strive to become better as individuals, teammates, and as a company.

respond - We react quickly and positively.

collaborate - We work together to be innovative and productive.

Safe - We care about the well-being of everyone we encounter; on the job site, in the office, and in our homes.



Awards/Recognition

ODNR - In 2015 ERC was awarded and recognized for outstanding abandoned mine land reclamation and exemplary reclamation techniques for Lake Morrow Dam Removal AMD Project by Ohio Department of Natural Resources Division of Mineral Resource Management

Inc. 5000 - In 2016 ERC is Ranked as the 2,082nd fastest-growing private companies in America according to Inc. Magazine.

Fast 50 - In 2016 ERC was selected at the Columbus Business First's annual Fast 50 awards program highlights 50 of the fastest growing and emerging companies in Central Ohio.

Environmental Award - In 2016 ERC was selected by the Lexington Kentucky Environmental Commission for the 2016 Environmental Award for the Picadome Golf Course Stream Restoration Project



A FORCE FOR NATURE



ERC Team Members



Chris McGovern

C.E.O.

chrism@ercontractor.com

Chris has been an entrepreneur for over 30 years. Chris is an expert in business to business marketing (B2B). Chris has owned multiple businesses in the past 30 years. Most recently Chris owned and operated Emerging Marketing for over 20 years.

For a complete resume please contact Chris at chrism@ercontractor.com or call 614.769.6535 ext. 2100



Rick Warwick

Vice President of Construction Management

rickw@ercontractor.com

Rick has been in the Environmental Contracting and Emergency Services Industry for over 30 years. Rick manages the operations of ERC from construction to project management. Rick has a vast array of experience on various environmental projects, design-build and emergency responses. Rick is a graduate from Findlay University.

For a complete resume please contact Rick at rickw@ercontractor.com or call 614.769.6535 ext. 2003

ERC Team Members



Chris Ruff

Vice President of Project Development

chrisr@ercontractor.com

Chris has over 20 years experience in the Environmental Contracting and Emergency Services Industry. Chris is an expert at developing cost budgets and scope evaluation for projects in the Environmental Contracting Industry. Chris serves as the senior estimator on all proposals, project review and cost considerations.

For a complete resume please contact Chris at chrisr@ercontractor.com or call 614.769.6535 ext. 2004



Chris Tucker

Senior Project Manager

christ@ercontractor.com

Chris has been involved in environmental remediation contracting for over 20 years, working for a variety of private and public clients throughout the region. Experienced at working for and negotiating with federal, state and local officials on a variety of complex projects

For a complete resume please contact Chris at christ@ercontractor.com or call 614.789.6535 ext. 2001



ERC Team Members



Brandon Markey
Development Manager

brandonm@ercontractor.com

Brandon has over 5 years of experience in Sales, Business Development & Estimating in the Environmental Contracting Industry. Brandon helps our clients when preparing conceptual design cost considerations and sophisticated proposals. He collaborates and connects with both internal and external customers to insure we provide the details needed for our clients.

For a complete resume please contact Brandon at brandonm@ercontractor.com or call 614.769.6535 ext. 2006



Shelli Fisher
Office Manager

shellif@ercontractor.com

Shelli is a Business Graduate from Muskingum College where she was a Captain on the Soccer Team. Shelli assists our projects with procurement, scheduling, logistics and administrative. She works closely with our Project Managers to insure we have what we need when we need it on our jobsites and for our customers.

For a complete resume please contact Shelli at shellif@ercontractor.com or call 614.769.6535 ext. 2005



ERC Field Team

Environmental Services

Drew Cavinee; Director of Environmental Services - drewc@ercontractor.com

Casey Ruff; Emergency Services Manager - caseyr@ercontractor.com

Construction Foreman

Robby Poling; Project Supervisor - robbyr@ercontractor.com

Shane Riffle; Project Supervisor - shaner@ercontractor.com

Randy Anschutz; Project Supervisor - randya@ercontractor.com





Services



Soil Remediation

Excavation processes can be as simple as hauling the contaminated soil to a regulated landfill which is typically referred to as dig and haul. ERC can provide remediation services for non-hazardous or hazardous soil excavation, loading and hauling to the nearest subtitle C or D landfill for disposal. Soil Remediation can also involve aerating the excavated material in the case of volatile organic compounds (VOCs). Recent advancements in bio-augmentation and bio-stimulation of the excavated material have also proven to be able to remediate semi-volatile organic compounds (SVOCs) onsite. If the contamination affects a river or bay bottom, then dredging of bay mud or other silty clays containing contaminants may be conducted. Stabilization/solidification (S/S) is a remediation and treatment technology that relies on the reaction between a binder and soil to stop/prevent or reduce the mobility of contaminants.



In-Situ Remediation

New in situ soil and groundwater treatment or oxidation technologies have become popular, for remediation of a wide range of soil and groundwater contaminants.

In-Situ Chemical Oxidation (ISCO) Remediation involves the mixing or injection of strong oxidants such as hydrogen peroxide, ozone gas, potassium permanganate or persulfates. This can be a significant project cost savings that avoids inflated offsite treatment and disposal costs. In most cases it prevents the generation of hazardous waste disposal and where it doesn't the cost savings comes in a lesser disposal costs due to the reduction of contaminants concentrations.

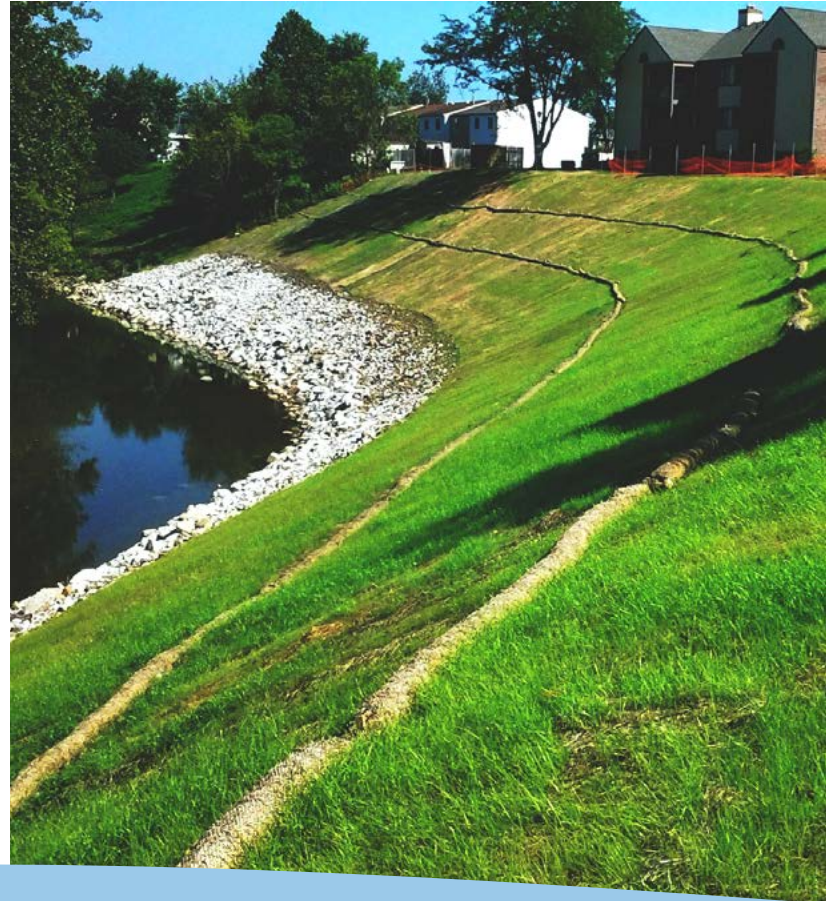
Metals Fixation or Stabilization is achieved by mixing in-situ various proprietary chemistries into the metals contaminated soil. This technology can treat various heavy metals and the process happens within hours. This allows for expedient sampling immediately following the mixing to help speed up the waste characterization process. This technique prevents generating a hazardous waste and ultimately becomes a project cost savings.





Stream and River Restoration

ERC aims to restore the natural state and functionality of a stream or river system in support of biodiversity, recreation, flood management and landscape development. Improved health may be indicated by expanded habitat for diverse species (e.g. fish, aquatic insects, other wildlife) and reduced stream bank erosion. Enhancements may also include improved water quality (i.e. reduction of pollutant levels and increase of dissolved oxygen levels) and achieving a self-sustaining, functional flow regime in the stream system that does not require periodic human intervention, such as dredging or construction of flood control structures. Stream restoration projects can also yield increased property values in adjacent areas. Techniques involve Channel Modification, cross vanes, j-hooks, imbricated rip rap, step pools, installation and planting of; root wads, brush layering, live branches, live stakes, bare roots, shrubs, trees, nature.



Stream or river restorations generally include; bank stabilization, erosion control, channel modification, thalweg realignment, floodplain widening, habitat creation, fish shelves, increased sinuosity, etc. All in the goal to restore and improve water quality in the watershed.

Design-Build

ERC has successfully partnered with Engineering and Consulting firms to perform design-build services. Full service from conceptual & final design, permitting and environmental approval, construction, plantings & seeding to as-builts and project closeout. This approach is beneficial to clients who want a team of experts working in concert to help establish and design the goals for the project. Then provide the expertise in acquiring the necessary permits and approvals. This hands on approach allows a project as complex as stream or river restoration to avoid the delays of change due to the traditional bid build relationships. Streams and rivers are dynamic systems that can't afford delays especially when dealing with mother nature.





Wetlands Creation, Restoration & Constructed Wetlands

Wetlands Creation is the construction of a wetland in an area that was not a wetland in the recent past (within the last 100-200 years) and that is isolated from existing wetlands (i.e., not directly adjacent). In other words, creation occurs when a wetland is placed on the landscape by some human activity on a non-wetland site. Typically, a wetland is created by excavation of upland soils to elevations that will support the growth of wetland species through the establishment of an appropriate hydrology.

Wetlands Restoration is the restoration of an ecosystem to a close approximation of its condition prior to disturbance. The objective is to emulate a natural, self-regulating system that is integrated ecologically with the landscape in which it occurs. Often, restoration requires one or more of the following processes: reconstruction of antecedent physical conditions; chemical adjustment of the soil and water; and biological manipulation, including the reintroduction of absent native flora and fauna.





A constructed wetland (CW) is an artificial wetland created for the purpose of treating anthropogenic discharge such as municipal or industrial wastewater, or stormwater runoff. It may also be created for land reclamation after mining, refineries, or other ecological disturbances such as required mitigation for natural areas lost to land development. Constructed wetlands are engineered systems that use natural functions of vegetation, soil, and organisms to treat different water streams. Depending on the type of wastewater that has to be treated the system has to be adjusted accordingly which means that pre or post-treatments might be necessary. Constructed Wetlands can be designed to emulate the features of natural wetlands, such as acting as a bio-filter or removing sediments and pollutants such as heavy metals from the water. Some constructed wetlands may also serve as a habitat for native and migratory wildlife, although that is usually not their main purpose. The two main types of constructed wetlands are subsurface flow and surface flow wetlands. The planted vegetation plays a role in contaminant removal but the filter bed, consisting usually of a combination of sand and gravel, has an equally important role to play.





Earthwork/Sitework/Utilities

Reservoirs, Dams, Canals and Shoreline

Excavation and embankment to install or repair reservoirs, dams, canals and shorelines. Installation of artificial impoundments or repairs to existing caused by settlement, seeps, slips or slides from erosion. Dredging sediment and armoring banks.

Slope or Bank Stabilization and landslide repair

Mass movements for slope failure can be caused by increase in shear stress, such as loading, lateral pressure, and transient forces. Alternatively, shear strength may be decreased by weathering, changes in pore water pressure, and organic material on slopes of earth and rock-fill dams, slopes of other types of embankments, excavated slopes, and natural slopes in soil and soft rock.

Stabilization techniques vary depending on the site and many techniques can be used in tandem to achieve the desired stability. Techniques include, but are not limited to the following; Retaining Walls, Geo-web, turf reinforcement matting, gabion baskets, vegetation, plantings, geotextiles, coir logs, compost filter socks, embankment compaction, large stone or rip rap.



Soil Vapor Extraction (SVE)

Soil vapor extraction (SVE) is an in-situ remediation technology for physical treatment of volatile and some semi-volatile contaminants in the vadose zone (unsaturated soils) (EPA, 2012). SVE is also referred to as in-situ soil venting or vacuum extraction. It is based on a mass transfer of contaminants from the solid and liquid phases into the gas phase. Vacuum blowers and extraction wells are used to induce gas flow through the subsurface. This gas phase contamination is collected at extraction wells then treated in aboveground systems tailored for the volume and constituent of concern.

Air Sparging also known as in-situ air stripping and in-situ volatilization is an in-situ remediation technology used for the treatment of saturated soil zones and groundwater contaminated with volatile organic compounds (VOCs). This technique involves injection of pressurized air into the contaminated groundwater enabling the hydrocarbons to change its state from dissolved to vapor state. The injection of air helps to flush the contaminants upward into the unsaturated zone where a vapor extraction system is typically implemented to remove the volatilized contaminants. This technology has beneficial side effects like adding dissolved oxygen to the contaminated ground water and un-saturated zone soils. This enhances biodegradation of contaminants below and above the water table.





UST & AST Removal

ERC has licensed staff to provide services to remove underground and above ground storage tanks (UST & AST).

ERC can remove tanks both underground and above ground. We have removed one tank up to multiple tank farms. We can provide soil sampling, demolition, closure reports as additional services if needed.

ERC has removed numerous underground and above ground storage tanks systems for fuel, oil and chemical purposes.

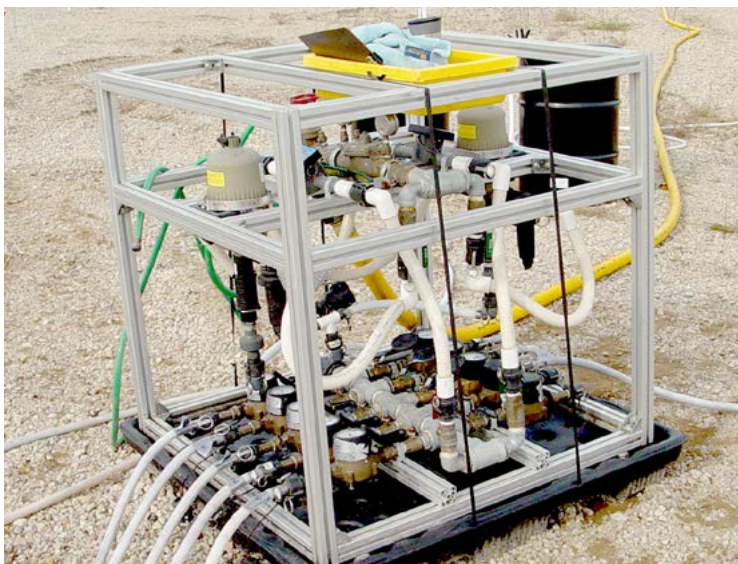


Groundwater Treatment

Passive Groundwater Treatment Systems are used to permit groundwater flow through specific treatment media. Contaminants in the groundwater react with the installed treatment medium and are either degraded, precipitated or absorbed in situ depending on the type of contaminant and treatment system.

Groundwater Recovery Systems are used to remove contaminated groundwater by drawing groundwater from wells and treating them for contaminated soil, water, air or gas. Dual-phase vacuum extraction (DPVE) can also be used to treat both contaminated groundwater and soil vapors.

Pump and Treat Systems are another method that ERC offers for remediating groundwater contaminated with chemicals such as industrial solvents, metals, or fuel oils. To complete the process, groundwater is pumped from an extraction well within the contaminated groundwater to an above-ground treatment system. The contaminated groundwater will pass through an air stripper and/or granular activated carbon prior to discharge into a permitted sewer or water way. Depending on the contaminant and volume the treatment system can be designed specifically for the need.





Interceptor Trench

An Interceptor Trench is a good option to intercept contaminated groundwater which is perched above a relatively impermeable soil. An interceptor trench is excavated into a relatively impermeable soil layer and installed for migrating contaminated groundwater to be intercepted and collected as it flows across the impermeable layer. The trench is typically installed across a contour of a slight to moderate sloping area to intercept groundwater prior to influencing slope stability. Generally, trenches are constructed 2 to 3 feet wide and are lined with a quality geotextile and filled with an aggregate that does not clog. There is a one to two foot overlap of the geotextile above the gravel and below the backfill in the trench. Water carried by the trench pipe should be conveyed to a tight line (solid pipe) which transfers water down the slope to an appropriate treatment system prior to the discharge point. Trenches can be excavated with curves and bends to prevent cutting tree roots and hitting underground utilities. Trenches can be covered with topsoil and replanted to conform to your existing ground conditions.



Landfill, Leachate & Gas Collection

ERC works predominantly on existing or abandoned landfills performing various scopes of work. Repairing or reconstructing clay caps with liner if pertinent. Installation of welded HDPE pipe for leachate or gas collection piping. Installation of structures or storage tanks to support the leachate and gas collection system. Installation of leachate sprinkler systems to re-circulate landfill liquid waste. Managing onsite waste from excavations. Installation and implementation of erosion control measures and site restoration including seeding and mulching.



Emergency Services

What would you do if a chemical spill or disaster occurred at your facility or on your property?

1. Who do I call?
2. What do I do?
3. Who can help?

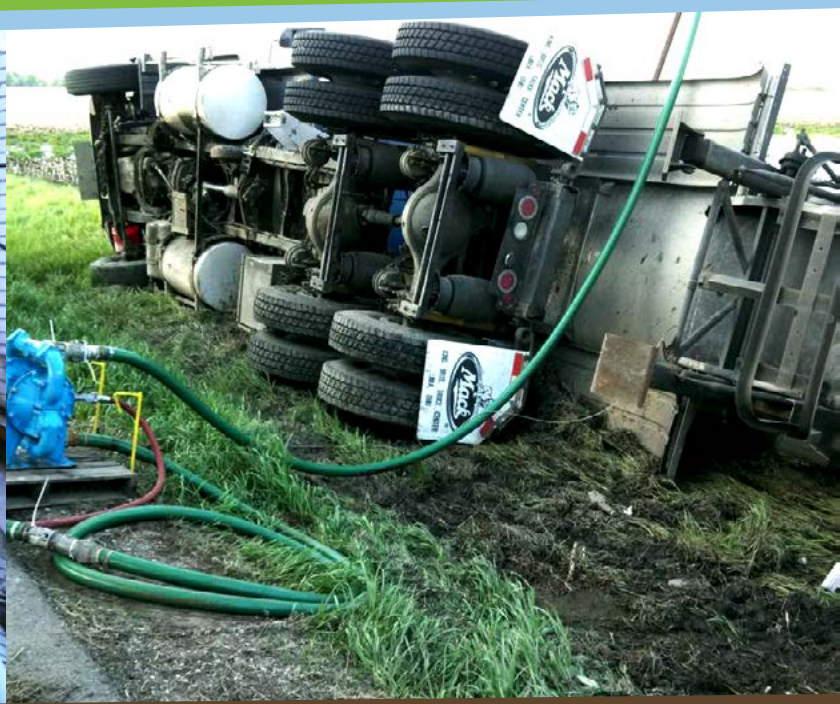
ERC Emergency Services can answer these questions for you and restore your facility or property. Call ERC and your Emergency becomes ours.

877.683.7724

24/7/365

Emergency Response Services on Land & in Water with over 30 years of experience.

- Mercury clean up and disposal
- Hazardous and non-hazardous waste disposal
- Sampling services
- Inventory of drums, totes, buckets
- Gaylord boxes and liners
- Tank cleaning/Confined space entry
- Waste transportation
- Chemical and fuel spill containment
- Emergency above ground/underground storage tank testing and removal
- 24/7 response with a real person answering the call
- Emergency disaster relief



For an Emergency call

877.683.7724

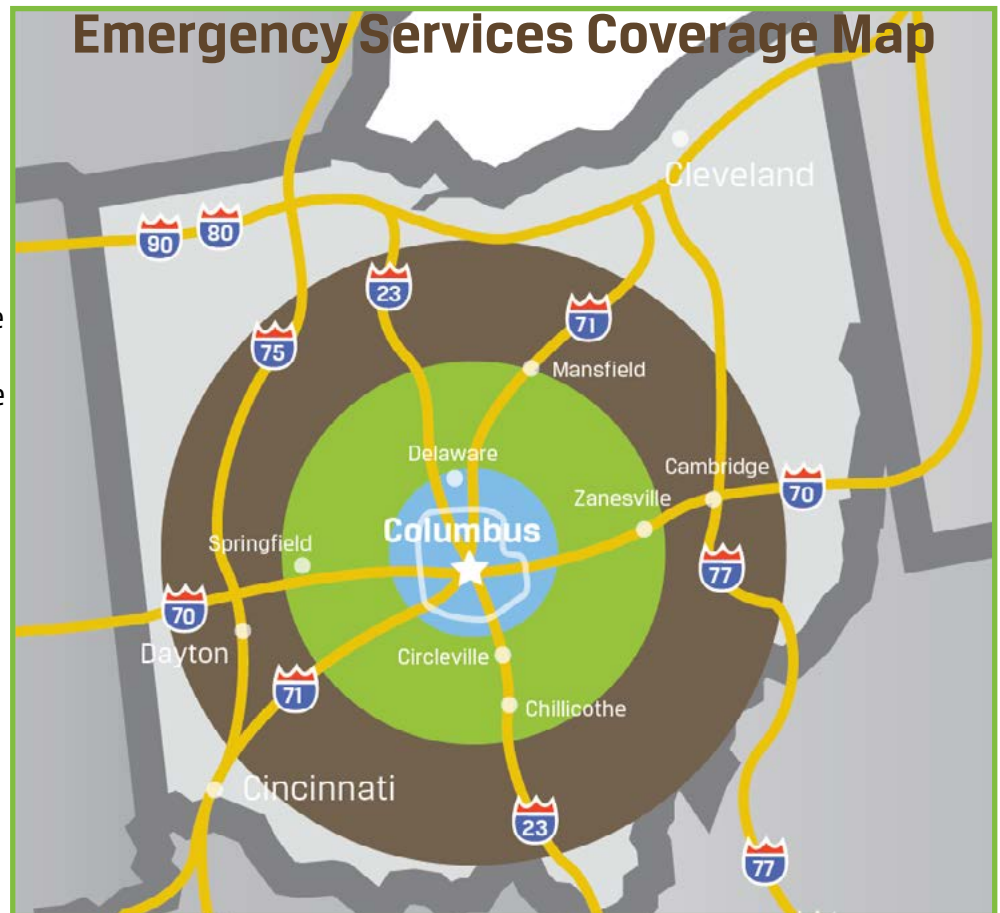
 **Zone 1** - 1 Hour Response

 **Zone 2** - 2 Hour Response

 **Zone 3** - 3 Hour Response

24/7/365 We Offer:

- HAZWHOPER 40 hour trained supervisors and technicians
- BUSTR certified tank installers
- Containment equipment at the ready
- Vacuum Trucks
- Skid steer and bucket broom
- Mini excavator
- Mercury vacuum





Project Experience

Pre-Demolition Environmental Clearance,

Demolition & Remediation Project

Cooper Tire & Rubber Company - Port Clinton, Ohio - \$2,650,000.00

Erosion control, utility relocations, building and foundation demolition, pavement demolishing and crushing for reuse onsite, in-situ soil treatment, soil excavation & disposal, onsite contaminated water treatment and discharge, fence replacement & repair, fill import, backfill & compaction, seed & mulch.



Lake Morrow Dam Removal & Gob Fire Quenching

ODNR Division of Mineral Resources - Wellston, Ohio - \$890,000.00

Erosion control, clearing & grubbing of 12 acres, 100 million gallon impoundment dewatering, excavation of 30,000 cys to remove existing earthen dam, onsite borrow backfill & compaction, cast in place 48" & 36" endwall and headwall, 1,000 feet of 48" & 36" reinforced concrete pipe installation, topsoil strip & placement, rock liner protection, gob fire seam excavation, gob fire quenching and extinguishing, seed & mulch of 20 acres.



Former ThyssenKrupp Facility Site Remediation and Stream Restoration

City of Fostoria - Fostoria, Ohio - \$980,000.00

Erosion control, clearing & grubbing, concrete removal & trenching inside of facility, 2"-6" HDPE welded pipe installation for infiltration gallery, pipe structures installation, concrete replacement, contaminated soil removal, import & place backfill & compact, stream dredging & channel substrate installation, seeding & mulching, electrical, pumps & pump station installation.



Project Experience

Landfill 1,2,3 & 4 Upgrades, Repairs, Stream Restoration & Bank Stabilization

Johns Manville - Athens, Tennessee & Richmond, Indiana - \$1,550,000.00

Erosion control, utility relocations & utility coordination, 2"-6" HDPE welded pipe installation, electrical drop & pole installation, leachate tank & pad installation, leachate sprinkler systems, waste removal and disposal, trenching & excavation, stream diversion, point bar excavation, stream widening, regrading & fill placement on slope, geo-web and infill installation, rock channel protection, fill import, backfill & compaction, topsoil import & placement, live stakes, shrubs, trees and bare root plantings.



Vapor Control System

Marble Cliff Commons - Columbus, Ohio - \$710,000.00

Erosion control, utility relocations & utility coordination, building design-build, building permits, electrical, 4"-12" HDPE leachate gas collection and condensate pipe installation, condensate traps, direction drilling, 16 - 8" x 50' vertical wells, system tie & startup, fill import, backfill & compaction, topsoil import & placement, pavement removal & replacement, seed & mulch. All work done in an active apartment community built on top of an existing landfill. Trash became present as shallow as 2 feet beneath ground surface.

Stoney Creek Apartments Stream Restoration & Bank Stabilization

Wallick Companies - Reynoldsburg, Ohio - \$950,000.00

Erosion control, utility relocations & utility coordination, stream diversion, point bar excavation, stream widening, regrading & fill placement on slope, design-build grid wall, rock channel protection, seep & tile repair, fill import & backfill & compaction, topsoil import & placement, pavement removal & replacement, live stakes, shrubs, trees and bare root plantings, seed & mulch.





HEADQUARTERS

6006 Groveport Rd
Groveport, Ohio 43125
614.769.6535
ercontractor.com

EMERGENCY SERVICES

877.683.7724