

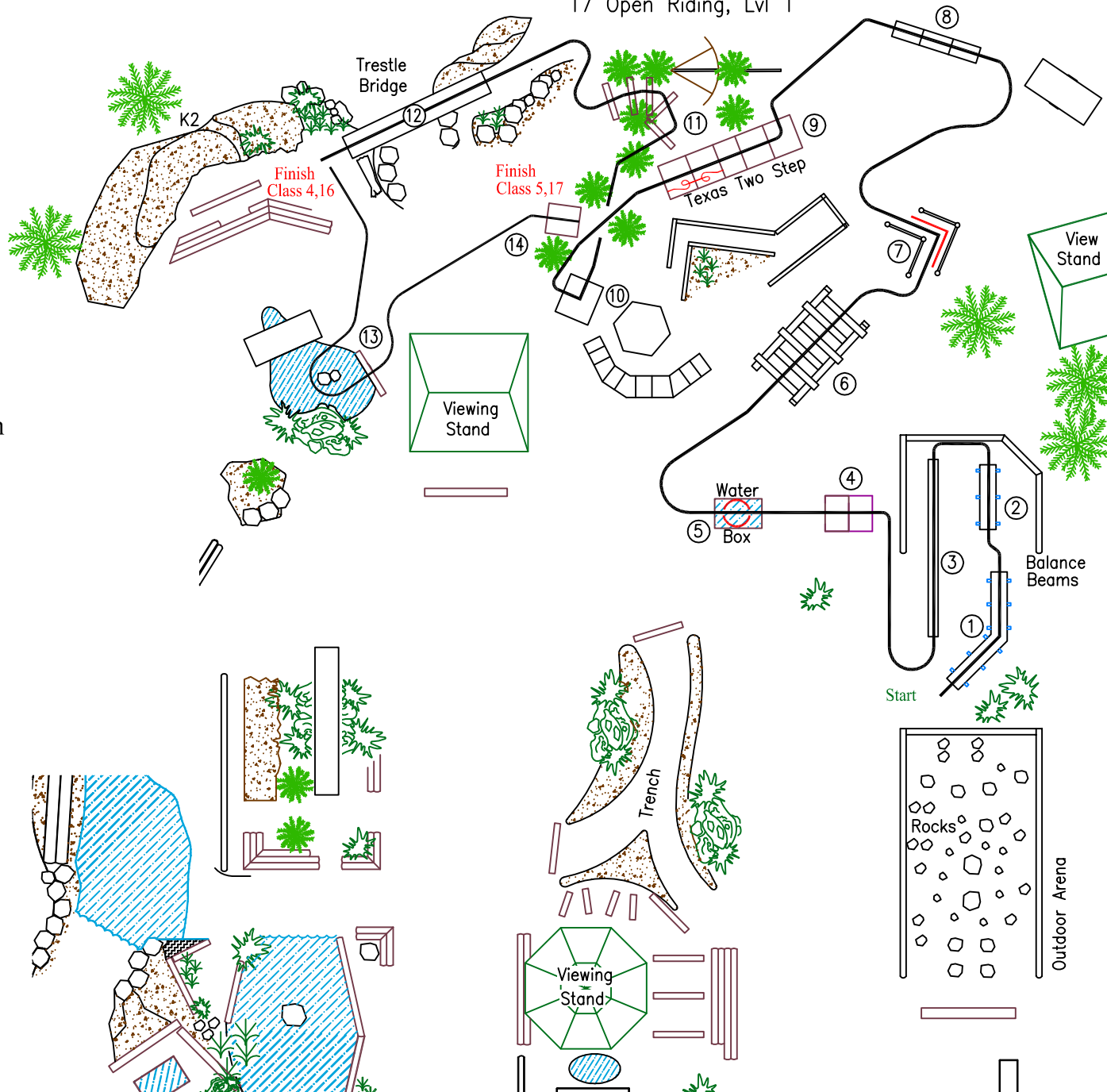
# BOLENDER HORSE PARK

## PATTERN: 2

CLASS: 4, 5, 16, 17

1. 45° Balance Beam
2. Short Balance Beam
3. Long Balance Beam
4. Step Box
5. Water Box
  - Mini Class 5: 360° turn
6. Cross Bucks
7. Walk through Back Through
  - Mini Class 5: Back Through
8. Step Balance Beam
9. Texas Two Step
  - Mini Class 5: 180° turn, back down
  - 180° turn, walk off
10. Box, 90° turn
11. Logs
12. Bridge
  - Class 5 & 17 only
13. Pond, around rock, over log
14. Box, step up, stop on box

Class: 4 Mini In-hand, Lvl 1  
 5 Mini In-hand, Lvl 2  
 16 Open In-hand, Lvl 1  
 17 Open Riding, Lvl 1



— walk  
 - - - trot  
 — mini/pony class 5

