

BOLENDER HORSE PARK

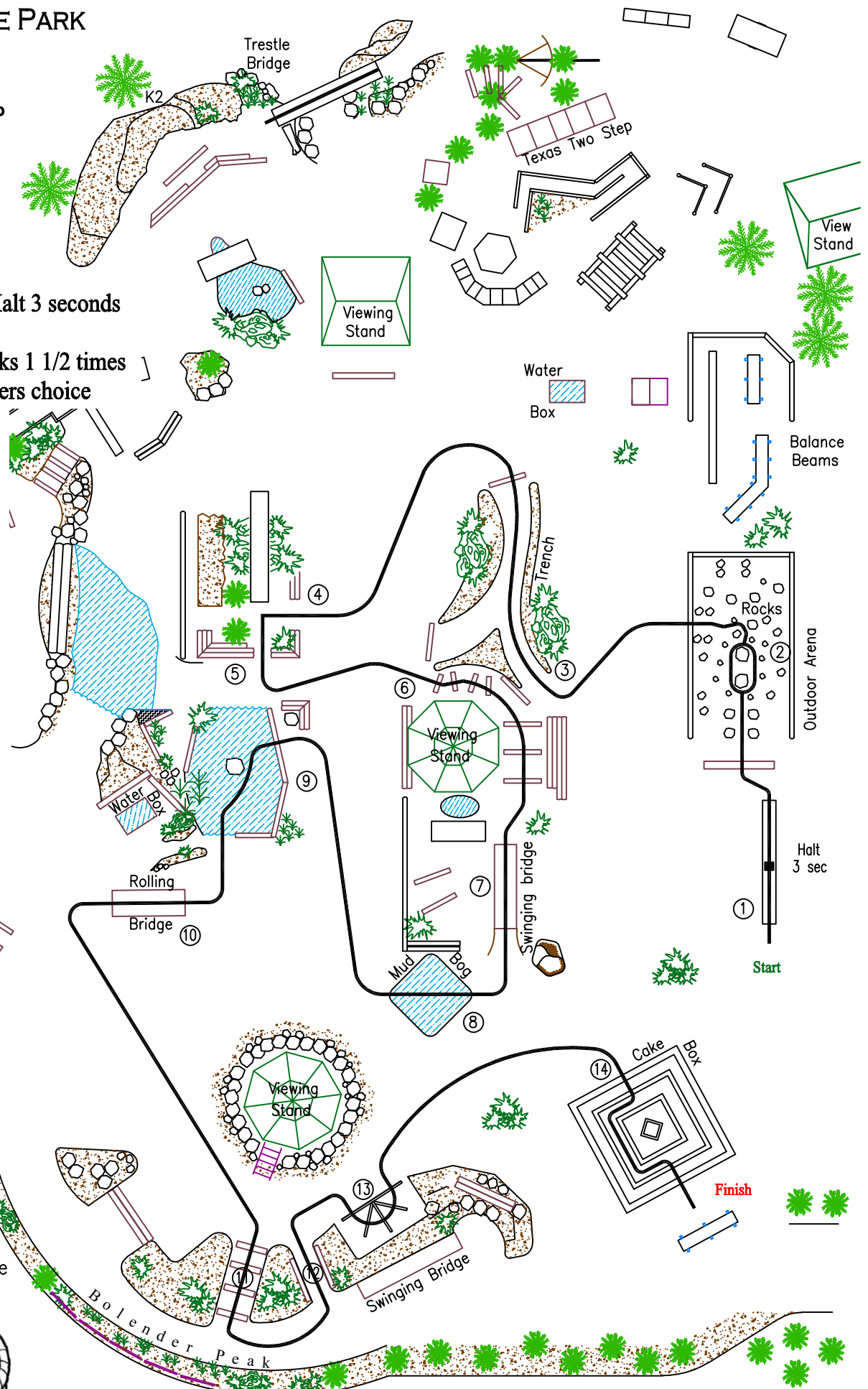
CLASS:

**CHAMPIONSHIP
RIDING**

For:

Novice

1. Balance Beam, Halt 3 seconds at middle
2. Rocks, circle rocks 1 1/2 times
Direction handlers choice
3. Trench
4. Up Hill
5. Down Hill
6. Logs
7. Swinging Bridge
8. Mud Bog
9. Pond
10. Rolling Bridge
11. Steps
12. Wall
13. Fan
14. Cake Box



- walk
- trot
- cantalope

