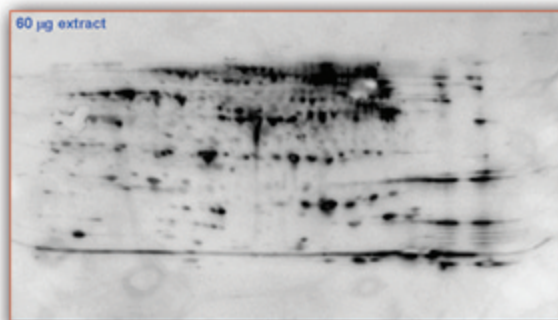
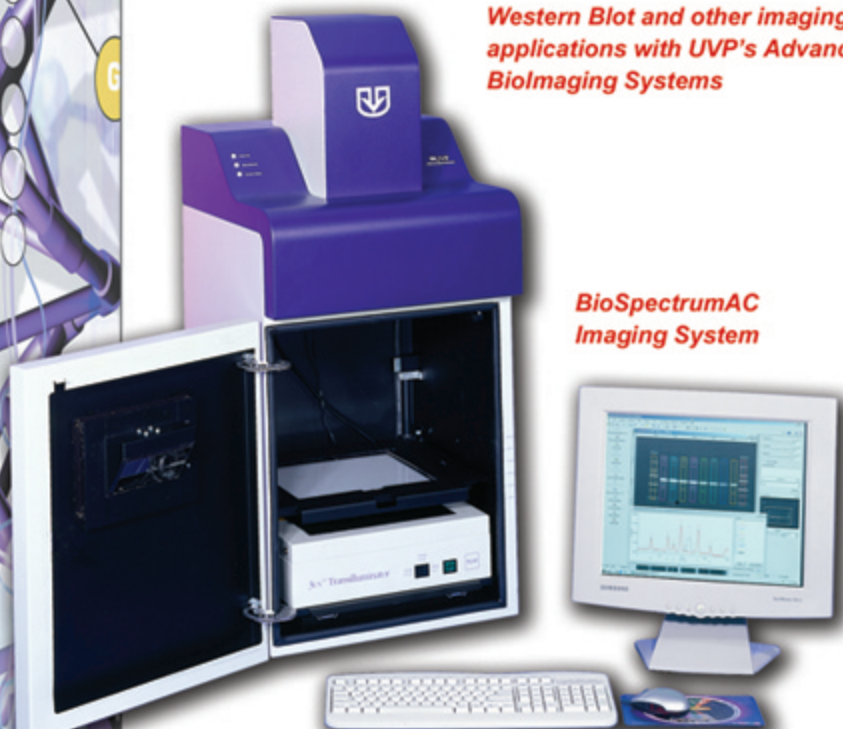


## Western Blot Imaging Applications

*Western Blot and other imaging applications with UVP's Advanced BioImaging Systems*

### BioSpectrumAC Imaging System



*2D Western Blot of E.coli Extract: Immunostained Nitrocellulose Electroblood Visualized by Chemiluminescence using UVP's BioSpectrumAC Imaging System. Image provided by Dr. Deb Chakravarti, Proteomics Center, Keck Graduate Institute of Applied Life Sciences*

Advanced BioImaging Systems from UVP excel at Western (e.g., protein) blot analysis because of the integrated ability to capture white light, fluorescent and chemiluminescent blots with high accuracy and sensitivity. The overhead UV illumination of the BioSpectrumAC and EC3 systems is ideal for uniform illumination of most fluorescent reagents, including Quantum Dots, while UVP's optional BioLite fiber optic source can deliver overhead monochromatic excitation light over a wide range of visible wavelengths. For chemiluminescent reactions, the thermoelectrically cooled CCD camera and wide aperture lens combine with a world class light-tight darkroom to easily capture chemiluminescent images. The overhead white light captures the color of the typical stains used for both total proteins and AlkPhos and Peroxidase staining reagents.

These advanced imaging systems offer a choice of cameras, to fit various applications and budgets, plus a UV transilluminator and the powerful VisionWorksLS image acquisition and analysis software.

Applications	BioSpectrumAC System	EC3 System	ChemiDoc-It System
Fluorescent Gels	X	X	
Colorimetric Gels	X	X	
Colony Placques	X	X	
Microtiter Plates	X	X	
No./Southern Blots	X	X	X
Western Blots	X	X	X
Dot Blots	X	X	X
1D Analysis	X	X	
Colony Counting	X	X	
Densitometry	X	X	
In Vivo/In Vitro	X	X	

### BioSpectrum<sup>®</sup>AC Imaging System

Multispectral imaging with computer automation ensures easy to control functionality of chemiluminescent, bioluminescent, fluorescent or colorimetric imaging. System features a light-tight darkroom, epi and transillumination UV and white light, emission filters and motorized zoom lens. The OptiChemi Camera is an extremely cooled, highly sensitive CCD camera with high dynamic range.

**EC3 Imaging System** Manual control of epi and transillumination UV and white light and emission filters for chemiluminescent, fluorescent, bioluminescent and colorimetric imaging. This light-tight darkroom has a unique gel viewer window. The BioChemi Camera is monochrome cooled camera producing low background noise with its high sensitivity capabilities.

### ChemiDoc-It Imaging System

Compact design with a light-tight darkroom for chemiluminescent applications. The sample platform is height adjustable for repeat experiments. The ChemiHR camera is a high resolution, cooled, mega-pixel CCD camera.

Alternate system configurations, with choice of camera and UV transilluminator, are available. Call UVP for details.